



**Redland Art Gallery**  
Exhibitions

2021

Creative Arts Redlands

# Connecting Stories

Every region has its own stories. During May 2021 regional galleries in South East Queensland North will showcase First Nations exhibition programs. Sharing stories across Country to celebrate culture and connect to each other.



RAG	Redland Art Gallery
Yura! (Welcome)	

2021 brings an interesting start, together with an opportunity to launch our new Redland Art Gallery (RAG) exhibitions for the year. On offer is a program of 19 inspirational, thought-provoking and reflective solo, group and national touring exhibitions. These can be viewed at our Cleveland and Capalaba galleries and also online for those times when you might not be able to visit us in-person.

There are a number of new RAG Collection acquisitions to share and enriching experiences to be had with our artists, local art groups and exhibition partners. Works across diverse mediums also feature as artists contemplate the environments they encounter, challenges, identity and culture of place. With too many fantastic exhibitions to list here, please read on, or visit our website for more details.

This year, our accompanying workshops and events will be released seasonally. We'll keep you up to date through our website, social media and public program fliers.

Thank you for your ongoing interest, involvement and support for our artists. We look forward to seeing you at RAG throughout the year.

**Emma Bain**  
Director, Redland Art Gallery

*Redland Art Gallery acknowledges the traditional custodians of the lands, waters and seas where we live and work. We pay our respects to Elders, past, present and future.*

Inside cover image: *Connecting Stories First Nations* exhibition. Courtesy of Leon Design and Regional Arts Services Network.

Cover image: Robyn Stacey, *Beau monde (pink)* 2006 from the series *Beau monde*, chromogenic print 120.0 x 120.0 cm. Courtesy of the artist, Darren Knight Gallery (Sydney) and Jan Manton Gallery (Brisbane).



## Foyer Features

2021

Throughout the year RAG showcases artists from the annual exhibition program and works from the RAG Collection.

### **7 February – 21 March**

*Drawn*

### **28 March – 9 May**

*Recent Acquisitions: Works from the RAG Collection*

### **16 May – 18 July**

*In Transitions: Renata Buziak, Vicki Kelleher and Zoe Wolfe*

### **25 July – 29 August**

*RAG Collection feature artists: Gerwyn Davies, Petrina Hicks, Cherine Fahd and Yavuz Erkan*

### **5 September – 10 October**

*A Medley of Trees: Redland Yurara Art Society and Sanctuary: Coochie Art Group*

### **17 October – 5 December**

*RAG Collection feature artists: Marty Smith, Brian Hatch and Luke Roberts*

### **12 December – 23 January**

*Tide and Time: Suzanne Danaher*

Image: Gerwyn Davies, *Tropics* 2016, photographic print. Redland Art Gallery Collection. Acquired in 2016 with Redland Art Gallery Acquisition Funds. Courtesy of the artist.





CL

Cleveland

7 Feb – 21 Mar

## Drawn

*Drawn* explores the edges of drawing – the places where this most fundamental of art forms intersects with and infiltrates other media. Artists Courtney Coombs, Piyali Ghosh, Helen Hardess, Aaron Perkins, Annie O'Rourke, Jude Roberts, Daniel Sherington, Sancintya Mohini Simpson, Branka Sinobad and Natalie Wood bring a local perspective to the international discussion about drawing's unbounded possibilities. Curated by Annie O'Rourke and Natalie Wood.

Image: Jude Roberts, *Points of intake; Flood Harvest (detail)* 2020, Khadi and Hosho paper, natural sediments, ink, acrylic, charcoal and carbon. Courtesy of the artist.



CA

Capalaba

16 Jan – 16 Mar

## Sunset at Wellington Point

Kathryn Blumke

*Sunset at Wellington Point* by Brisbane artist Kathryn Blumke presents a series of geometric watercolour paintings in response to her time spent observing the afternoon light over King Island at Wellington Point. Blumke is known for exploring sensations through grids, colour and circular forms which she links to patterns in the natural environment.

Image: Kathryn Blumke, *Wellington Point Quilt 2 (portion 1)* 2020, watercolour and graphite pencil on Arches paper. Courtesy of the artist. Photography by Carl Warner.



**CL**

Cleveland

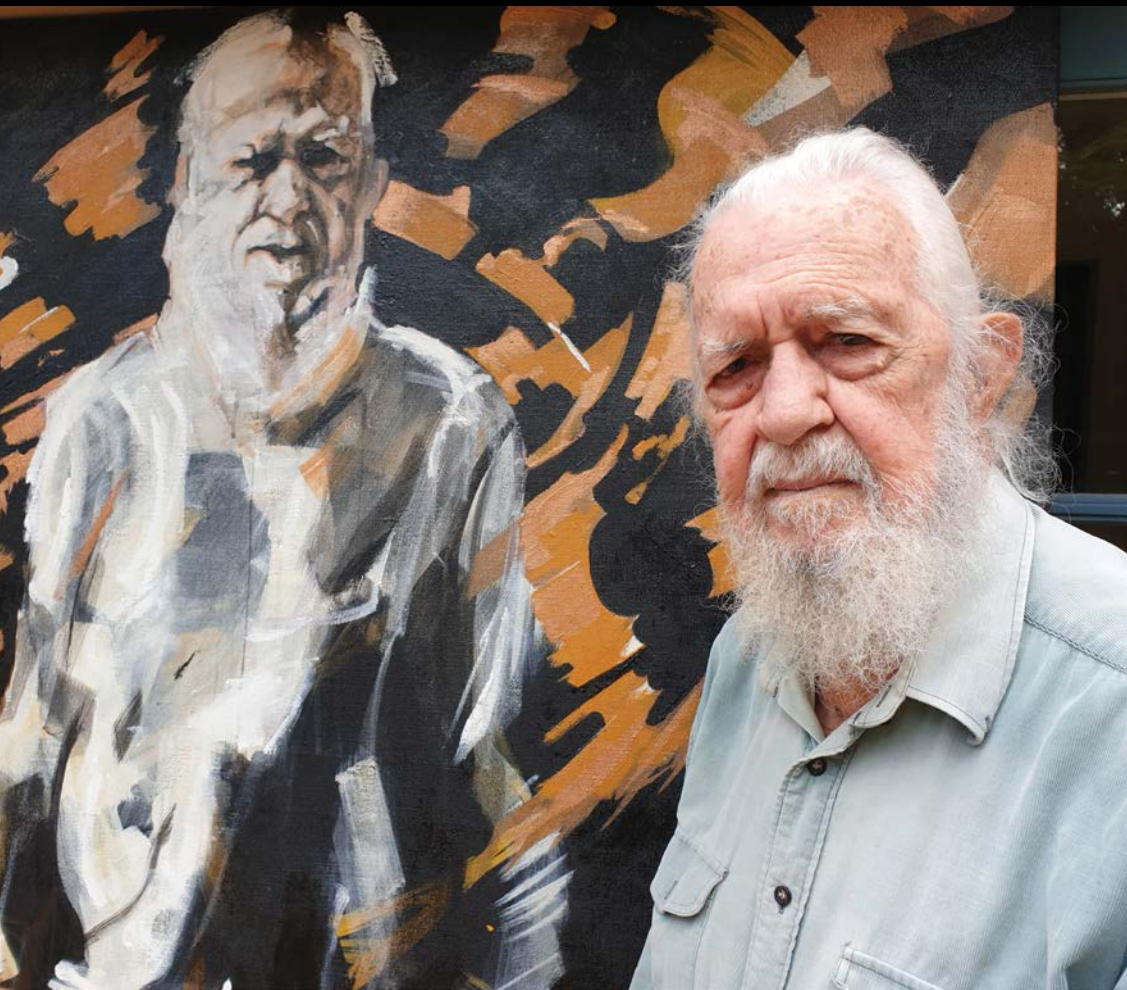
**28 Mar – 9 May**

## Recent Acquisitions

Works from the RAG Collection

*Recent Acquisitions: Works from the RAG Collection* unveils selected works acquired over the past three years for the Redland Art Gallery (RAG) Collection. Encompassing a range of media and content, these works demonstrate the diversity of the RAG Collection, while also representing key focus areas. Artist books and works on paper form a large part of the exhibition, while explorations of portraiture, landscape and identity re-emerge throughout. Curated by Lizzie Riek.

Image: Sonja Carmichael and Elisa Jane Carmichael, *Jalo Boma (after the burn) tears from the sea* 2019, ungaire, ghost net, discarded wire, silk wire, synthetic fibres, fishing line, discarded plastics, fish scales, Lomandra and raffia. Acquired in 2020 with Redland Art Gallery Acquisition Funds. Courtesy of the artists and Onespace Gallery. Photography by Louis Lim.

**CL**

Cleveland

**28 Mar – 9 May**

## Singing Up Spirit of the Land

Distinguished Ngugi Elder and Quandamooka Traditional Owner Uncle Bob Anderson (Dr Robert Anderson OAM) is the focus of this exhibition, which features contemporary digital and painted portraits by artist Jo Fay Duncan. *Singing Up Spirit of the Land* also explores the spiritual meaning behind the end of sand mining in 2019 on Minjerribah (North Stradbroke Island), a result of native title determinations granted to the Quandamooka Peoples in 2011.

Image: Uncle Bob Anderson in front of a portrait painting by Jo Fay Duncan, *Walking Country Once More* (detail) 2020. Synthetic polymer paint on canvas. Courtesy of the artist and Dr Robert (Uncle Bob) Anderson OAM.





CA

Capalaba

20 Mar – 18 May

## Sheer Light

Helle Cook

Brisbane-based Danish/Australian painter Helle Cook, draws parallels between Nordic and Queensland light and environment. Her art practice expands beyond the studio as she embarks on field trips into nature, often accompanied by her sheer textile paintings. In her exhibition, *Sheer Light*, Cook explores the sensory experience of light and place in expanded painting, embracing the natural environments surrounding Redlands Coast.

Image: Helle Cook, *Sea of light*  
2020, oil on ramie textile.  
Courtesy of the artist.





CL

Cleveland

16 May – 18 Jul

## Response

Carol McGregor

In *Response*, Carol McGregor, an artist of Wathaurung and Scottish descent, reflects on what was here, looked after and used as a resource before colonisation. Extending her research through discussion and consultation with Quandamooka and south-east Queensland Aboriginal communities, *Response* will be anchored by a possum skin cloak specific to Quandamooka Country. The exhibition also includes a new series of sculptural works.

*An exhibition held in conjunction with National Reconciliation Week 2021 and NAIDOC Week 2021.*

*Connecting Stories: Every region has its own stories. During May 2021 regional galleries in South East Queensland North will showcase First Nations exhibition programs. Sharing stories across Country to celebrate culture and connect to each other.*

Image: Carol McGregor,  
*silent sounds* (detail) 2020, clay.  
Courtesy of the artist.





CL

Cleveland

16 May – 18 Jul

## Fragments: A Printed Environment

Tamika Grant-Iramu

*Fragments: A Printed Environment* is an archive of Tamika Grant-Iramu's experiences and impressions of environments she has encountered. Using printmaking as a tool for reimagining an environment, she responds to natural forms that exist within diverse urban and suburban contexts. Grant-Iramu's work brings into focus aspects of the natural environment that often go unnoticed and yet are an important part of the identity and culture of place. Tamika Grant-Iramu is represented by Onespace Gallery.

*A Redland Art Gallery and Onespace exhibition partnership.*

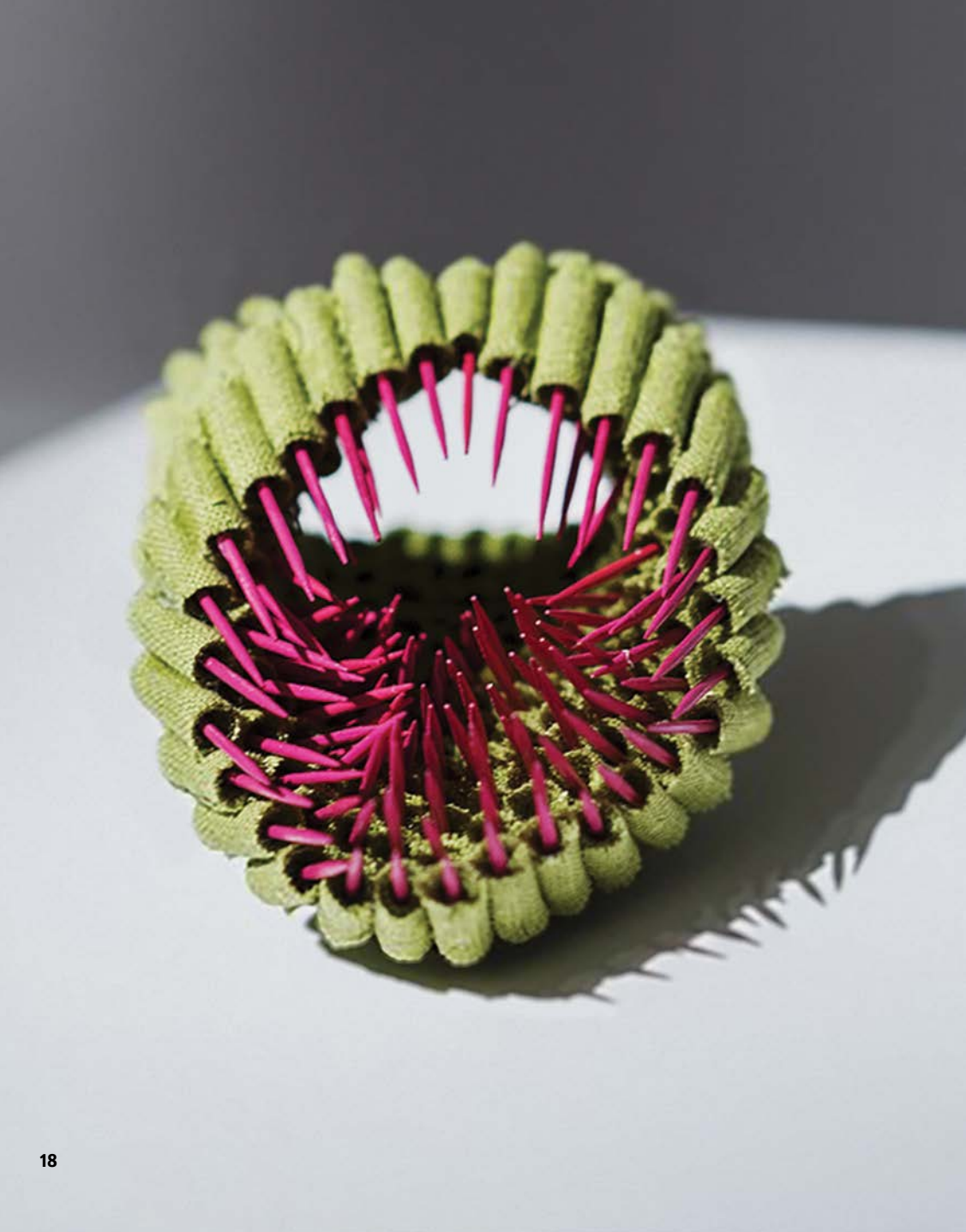
*An exhibition held in conjunction with National Reconciliation Week 2021 and NAIDOC Week 2021.*

*Connecting Stories: Every region has its own stories. During May 2021 regional galleries in South East Queensland North will showcase First Nations exhibition programs. Sharing stories across Country to celebrate culture and connect to each other.*

Image: Tamika Grant-Iramu,  
*Fragments of Ta Prohm: restoration*  
(detail) 2020, vinyl cut on  
Hahnemuhle paper. Courtesy of  
the artist and Onespace Gallery.  
Photography by Louis Lim.

**onespace**





CA

Capalaba

22 May – 13 Jul

## Baltic Mini Textiles

Launched in 1993 in Gdynia, Poland, the *Baltic Mini Textile* Gdynia exhibition is one of Europe's leading reviews of textile miniatures. The juried event is held every third year. It features artists from around the globe. The small scale (20 x 20 x 20cm) allows artists to experiment with complex, intricate techniques and use delicate and ephemeral materials. The selection of textiles on display demonstrates a diversity of techniques and fascinating artistic solutions.

*Warwick Art Gallery (Queensland, Australia), in partnership with Gdynia City Museum (Poland), has curated this special international tour featuring thirty-six works by artists from Europe and Australia.*



CL

Cleveland

25 Jul – 29 Aug

## Robyn Stacey: as still as life

A Monash Gallery of Art (MGA)  
travelling exhibition

*Robyn Stacey: as still as life* leads audiences into the tantalising world of the still-life tradition. The exhibition opens with an exploration of still-life photographs drawn from MGA's Collection, placing the genre and Robyn Stacey's work into context. Stacey is one of Australia's leading photographic artists who brings historical collections to life on a monumental scale, interrogating what these collections meant for the original owners and brilliantly interweaving personal historical narratives into sumptuous still lifes. Curated by Anouska Phizacklea, MGA Gallery Director.

Artists: Katthy Cavaliere, Olive Cotton, Max Dupain, Joachim Froese, Christine Godden, Janina Green, Fiona Hall, Penelope Malone, David Moore, George J Morris, Michael Riley, Robyn Stacey, Anne Zahalka.

Image: Robyn Stacey, *Fontaine de Vaucluse* (detail) 2009 from the series *Empire line* chromogenic print 120.0 x 169.5cm. Monash Gallery of Art, City of Monash Collection. Courtesy of the artist, Darren Knight Gallery (Sydney) and Jan Manton Gallery (Brisbane).

mga  
monash gallery of art

CITY OF  
MONASH

CREATIVE VICTORIA



**CL**

Cleveland

**25 Jul – 29 Aug**

## Wish You Were Here

Kellie O'Dempsey

*Wish You Were Here* is an uncanny sideshow world of uncertainty where domestic objects collide with external and familiar landscapes, and oddball and absurdist beings travel nowhere, as if stuck in a behavioural loop. Kellie O'Dempsey's immersive installation of collaged works on paper, projected animations and Augmented Reality fumbles for some sign of progress and connection. Visitors may experience the 'outside' and 'inside' blending as the ever-changing, moving world goes nowhere.

Image: Kellie O'Dempsey, *Wish You Were Here* (detail) 2020–21, mixed media and projection installation. Courtesy of the artist.



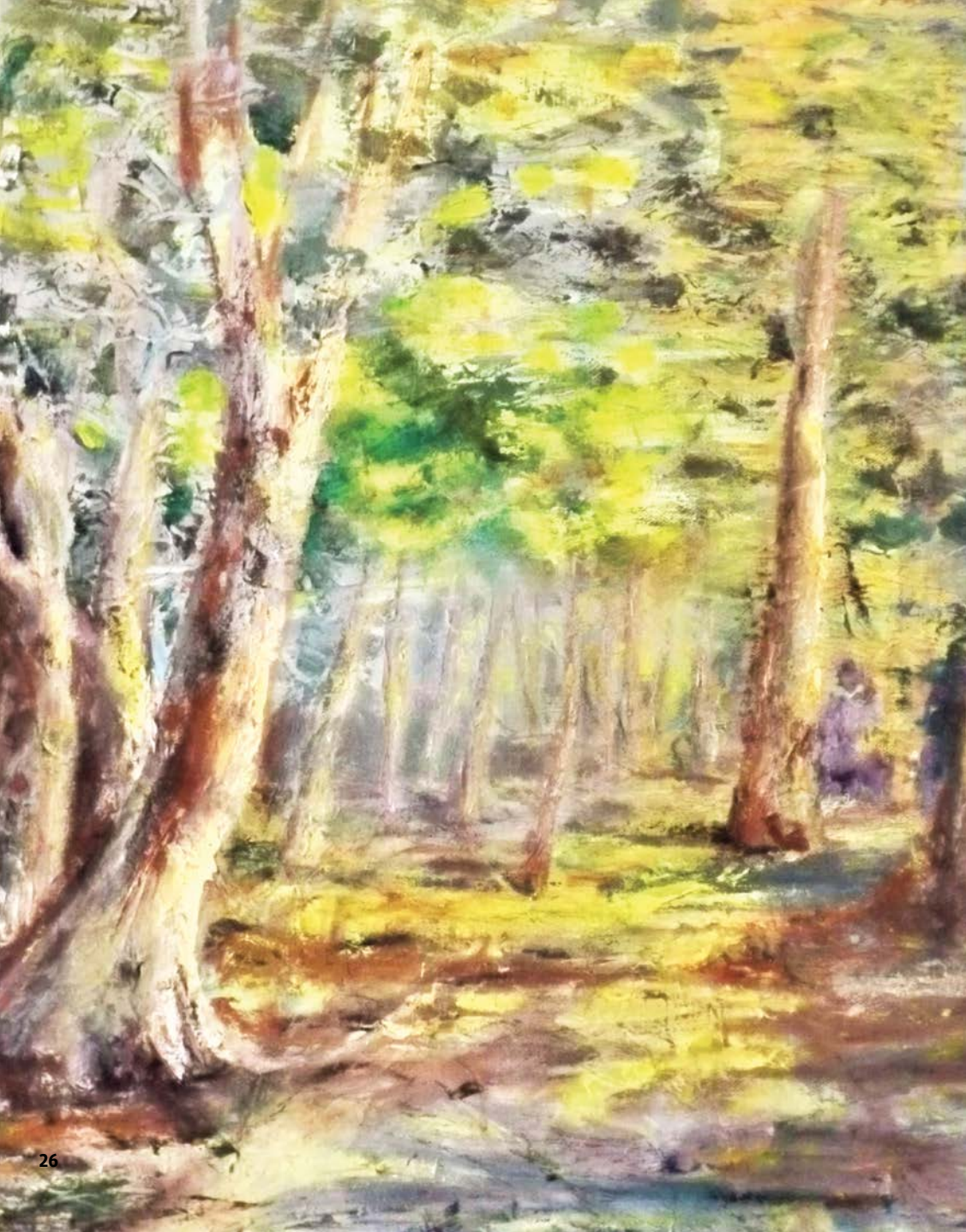
CA	Capalaba	17 Jul – 7 Sep
<h2>In Focus 2021</h2>		

*In Focus 2021* celebrates the wealth of artists living and working on Redlands Coast and the important role art groups play in the cultural life of the region. In recognition of seniors in our community, Redlands Coast-based art group members have created small-scale artworks to celebrate the powerful relationships that exist across generations, and to honour our seniors.

*An exhibition held in conjunction with Queensland Seniors Week 2021.*

Image: *In Focus 2020* at RAG, Capalaba. Courtesy of the participating artists and Redland Art Gallery.





CL

Cleveland

5 Sep – 10 Oct

## A Medley of Trees

Redland Yurara Art Society

Local art group, Redland Yurara Art Society was established in 1962 and has a studio base at Thornlands. In *A Medley of Trees*, members have created works that celebrate the Redlands Coast landscape, in particular the variety and abundance of trees. Our trees play an important role, providing protection and food for local wildlife, shade for recreation, and natural beauty for residents and visitors to Redlands Coast on Quandamooka Country.

Image: Mary Kirkby, *Capalaba pathway at Wattle time* (detail)  
2020, oil on canvas. Courtesy  
of the artist.

**CL**

Cleveland

**5 Sep – 10 Oct**

## Sanctuary

Coochie Art Group

Coochie Art Group members reflect on the many challenges of 2020 in their exhibition *Sanctuary*. Their works invite visitors to take a glimpse at the personal sanctuaries that have sustained their creativity and spirit during this period. Considered safe havens and a way to escape, personal sanctuaries come in many forms for these local art group members, including time in their art studios and the natural world.

Image: Sue Thomas, *King Protea* (detail) 2020, watercolour on paper. Courtesy of the artist.





CA

Capalaba

11 Sep – 9 Nov

## Early

Emma Thorp

*Early* chronicles Emma Thorp's personal journey from the extremely premature birth of her son, through hospitalisation, continuing therapies and his diagnosis with autism and Attention Deficit Hyperactivity Disorder (ADHD). Offering an honest insight into the impact on her family, this exhibition also celebrates a joy that comes with exposure to an autistic mind. By illustrating her memories, Thorp allows a glimpse into a world that can often be very insular, private and all-consuming.

*An exhibition held in conjunction with Queensland Disability Action Week 2021.*

Image: Emma Thorp, *Stereotypical behaviours* 2018, synthetic polymer paint and coloured pencils on Saunders Waterford 300gsm. Courtesy of the artist.

**CL**

Cleveland

**17 Oct – 5 Dec**

## Neridah Stockley

A Secular View

*A Secular View* presents a survey of Northern Territory-based artist Neridah Stockley's 25-year art practice. Best known as a painter, Stockley invites the viewer to encounter sections of her surveyed and deconstructed landscapes. This exhibition also reveals the diversity of Stockley's practice which includes drawings, collage, dry point etchings and a growing body of ceramic work.

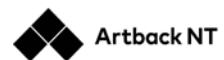


Image: Neridah Stockley, *Back of a house* (detail) 2014, oil on hardboard.  
30 x 25cm. Courtesy of the artist.





CL

Cleveland

17 Oct – 5 Dec

## Bill Yaxley

Lamb Island

Significant Australian artist Bill Yaxley shares lively commentary and stories about his time on Redlands Coast on Quandamooka Country's Lamb Island (Ngudooroo). Charmed by his surrounds and studio, Yaxley has used colour, texture, movement and humour to perfectly capture his experience of the island. Larrikinism, storytelling and his unique approach to painting and sculpture in this exhibition are all typical of his work. Curated by Bonnie Melrose.

*An exhibition presented by Redland Art Gallery in partnership with Bruce Heiser Projects.*

BRUCE HEISER  
PROJECTS

Image: Bill Yaxley, *Backyard Lamb Island* (detail), 2018, oil on canvas. Redland Art Gallery Collection. Acquired in 2019 with Redland Art Gallery Acquisition Funds. Courtesy of the artist. Photography by Carl Warner.





CA

Capalaba

13 Nov – 11 Jan

## Wallum

Lesley Kendall

Lesley Kendall reflects on her immersion in the Wallum heathland and her learnings about its flora and fauna through painting, making, and unearthing its beauty and wisdom. Her works focus on the splendour and value of the Wallum heathlands of Minjerribah (North Stradbroke Island).

Image: Lesley Kendall, *Wallum* (detail) 2020, watercolour and ink on paper. Courtesy of the artist.





CL

Cleveland

12 Dec – 23 Jan

## Suzanne Danaher

Tide and Time

*Tide and Time* presents a series of paintings by Brisbane-based artist Suzanne Danaher. This body of work is inspired by her time spent in and around Redlands Coast, and beyond. She is an observer of life who has spent a great deal of time on boats, delighting in the marine experience. She captures these observations and collective memories in her works on paper and canvas.

Image: Suzanne Danaher, *Iron ocka 1*  
(detail) 2020, mixed media on paper.  
Courtesy of the artist.



CL

Cleveland

12 Dec – 23 Jan

## Barbara Cleveland

Thinking Business

*Thinking Business* is an exhibition by the artist collective Barbara Cleveland. It explores forms of female friendship, collaboration and artistic labour. The project takes its title from Hannah Arendt's description of her friendship with Mary McCarthy. As Arendt wrote, "It's not that we think so much alike, but that we do this thinking-business for and with each other." This idea of an intellectual and creative connection between women is at the centre of this project, which focuses on the 15-year-long working relationship between the Barbara Cleveland members.

*A Goulburn Regional Art Gallery exhibition toured by Museums & Galleries of NSW. This project has been assisted by the Australian Government through the Australia Council for the Arts, its arts funding and advisory body.*



Image: Barbara Cleveland, *Performance Art (15 Actions for the Face)* (still), 2009, dual channel video, 15:35 minutes. Image courtesy the artists and Sullivan+Strumpf, Sydney.





## RAG Collection

The RAG Collection currently houses over 750 artworks produced by more than 230 artists. These include local, emerging, established, early settler and Aboriginal and Torres Strait Islander artists.

Redland City Council is committed to resourcing and facilitating the acquisition and management of a quality visual arts, craft and design collection that reflects the diversity and uniqueness of Redlands Coast heritage, culture, identity and sense of place.

RAG is a Deductible Gift Recipient and is eligible to receive artwork donations for the collection under the Australian Government's Cultural Gifts Program, which provides tax incentives to private donors. For more information on the Cultural Gifts Program visit: <https://www.arts.gov.au/funding-and-support/cultural-gifts-program>

The RAG Collection continues to grow each year as a result of cultural gifts, donations and carefully selected acquisitions. Our thanks go out to our generous donors.

For more information and to view the diversity and significance of RAG acquisitions visit our website: <http://artgallery.redland.qld.gov.au/ragcollection>

Image: Glen Skien, *Book XII - History of library of phenomenology* 2009, altered book. Redland Art Gallery Collection. Acquired in 2010 with Redland Art Gallery Acquisition Funds. Courtesy of the artist. Photography by Carl Warner.

# Closed Dates 2021

RAG is closed for exhibition changeover, holiday periods and maintenance on the following dates:

### RAG, Cleveland

Tuesday 26 January  
Monday 1 – Friday 5 February  
Monday 22 – Friday 26 March  
Friday 2 – Monday 5 April  
Monday 26 April  
Monday 3 May  
Monday 10 – Friday 14 May  
Monday 19 – Friday 23 July  
Monday 9 August  
Monday 30 August – Friday 3 September  
Monday 4 October  
Monday 11 – Friday 15 October  
Monday 6 – Friday 10 December  
Friday 24 December 2021 – Sunday 2 January 2022

### RAG, Capalaba

Wednesday 13 – Friday 15 January  
Tuesday 26 January  
Wednesday 17 – Friday 19 March  
Friday 2 – Saturday 3 April  
Monday 5 April  
Monday 26 April  
Monday 3 May  
Wednesday 19 – Friday 21 May  
Wednesday 14 – Friday 16 July  
Monday 9 August  
Wednesday 8 – Friday 10 September  
Monday 4 October  
Wednesday 10 – Friday 12 November  
Friday 24 December 2021 – Saturday 1 January 2022

Please check the RAG website for the latest COVID-19 information to assist you with planning your visit.

## RAG Staff

Director  
Exhibitions and Public Programs Officer  
Program Officer  
Collections and Curatorial Officer  
Curatorial Officer (Casual)  
Gallery Support Officer (Casual)  
Gallery Support Officer (Casual)  
Gallery Support Officer (Casual)

Emma Bain  
Amy Wilson  
Jasmine Smith  
Lizzie Riek  
Bonnie Melrose  
Laura Day  
Kate O'Connor  
Chris Aird

All information correct at time of printing.

### Redland Art Gallery

Finalist 2020 Indigenous Project or Keeping Place, Museums and Galleries National Awards (MAGNA)  
Finalist 2020 Museums Australia Publication Design Awards (MAPDA)  
Finalist and Winner 2019 Information Brochure, Museums Australia Publication Design Awards (MAPDA)  
Finalist 2019 Project: Organisations with Paid Staff, Gallery and Museum Achievement Awards (GAMAA)  
Finalist 2019 Engagement: Organisations with Paid Staff, Gallery and Museum Achievement Awards (GAMAA)



## What's On 2021

At Redland Performing Arts Centre

### RAG and Redland Performing Arts Centre (RPAC) are part of Creative Arts Redlands.

RPAC is delighted to bring live theatre, full houses and a smorgasbord of entertainment options back to Redlands Coast.

The 2021 RPAC program has been divided into three Acts, with Act 1 released in January.

Highlights from the full year are below. For information about all upcoming performances and events, pick up a copy of RPAC's latest brochure or visit [www.rpac.com.au](http://www.rpac.com.au)

### MUSIC

Mirusia  
Queensland Symphony Orchestra  
Grigoryan Brothers  
The Australian Bee Gees Show  
Piece of My Heart – The Janis Joplin Experience

### MUSICAL THEATRE

Margaret Fulton the Musical  
The World of Musicals  
Cloudland the Musical

### FAMILY THEATRE

The Very Hungry Caterpillar Show  
Escape from Trash Mountain  
The Owl and the Pussycat  
Wilbur the Optical Whale

### DANCE

Queensland Ballet – Tutus on Tour  
A Taste of Ireland  
The Tap Pack

### CIRCUS & ACROBATICS

By a Thread – One Fell Swoop Circus  
Flipside Circus School Holiday Workshops

### COMEDY

Fat Musicals

### DRAMA

Bell Shakespeare's A Midsummer Night's Dream  
Rovers  
The One Day of the Year  
And so much more...

Image: The Very Hungry Caterpillar Show.  
Photo by Jonathan Rockefeller.

2–16 Middle Street, Cleveland Q 4163  
[www.rpac.com.au](http://www.rpac.com.au) or (07) 3829 8131

/RedlandPerformingArtsCentre  
 @RedlandPerformingArtsCentre





## Cleveland & Capalaba

### Redland Art Gallery, Cleveland

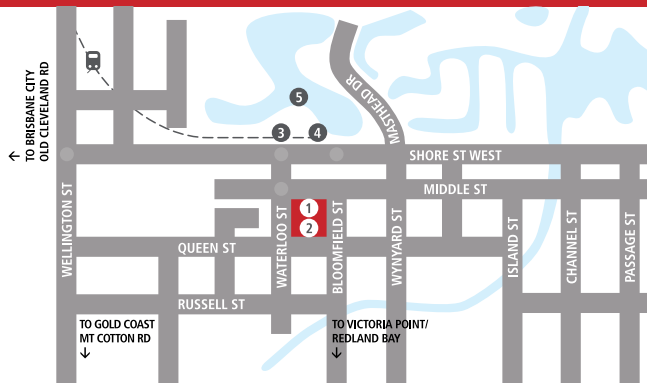
Cnr Middle and Bloomfield Streets,  
Cleveland Q 4163

Monday to Friday 9am – 4pm

Sunday 9am – 2pm

Admission free

- 1 Redland Art Gallery, Cleveland
- 2 Council Chambers
- 3 Tourist Bus Stop
- 4 Cleveland Train Station
- 5 Raby Bay Harbour



### Redland Art Gallery, Capalaba

Capalaba Place, Noeleen Street,  
Capalaba Q 4157

Monday to Friday 9am – 5pm

Saturday 9am – 4pm

Admission free

- 1 Redland Art Gallery, Capalaba  
Capalaba Library  
Redland City Council Customer  
Service Centre
- 2 Bus Interchange
- 3 Capalaba Park Shopping Centre
- 4 Capalaba Central  
Shopping Centre



*Redland Art Gallery acknowledges the traditional custodians of the lands, waters and seas where we live and work. We pay our respects to Elders, past, present and future.*

*Redland Art Gallery is an initiative of Redland City Council, dedicated to the late Eddie Santagiuliana.*

### Redland Art Gallery

Tel: (07) 3829 8899 or email:  
gallery@redland.qld.gov.au

**artgallery.redland.qld.gov.au**

 /RedlandArtGallery

 @redlandartgallery



**REDLAND ART  
GALLERY**