

Parents and Prams

Cargo Ship

This easy and fun activity allows young children to get creative by painting a cargo ship. They'll enjoy customising it with craft and recycled materials you have lying around the house and an added bonus; they'll have a toy to use with their wooden blocks, toy cars and/or figurines.

After you've finished this activity, why not visit the photographs in person in our latest exhibition *Port* by Damien O'Mara at Redland Art Gallery, Cleveland. On display until Sunday 6 September 2020.

For this activity you will need:

- 1 egg carton (12 eggs size)
- 1 cardboard roll
- Paint brush
- White paint to prime your cargo ship
- Blue, yellow, red, black and white paint
- Paint palette or plate to mix colours
- Damp rag for wiping paint off (you could also use paper towel)
- Range of materials (cotton balls, string, coloured paper, plastic lids, etc.)
- Scissors and glue (will require adult assistance)
- Heavy duty scissors, hot glue gun and hot glue gun sticks (for adult use only)



Damien O'Mara, *Bunga Kelana 8* (detail) 2019, inkjet print on photorag. Courtesy of the artist.



Cargo Ship painted by Finn.

Redland Art Gallery
Tel: (07) 3829 8899 or email:
gallery@redland.qld.gov.au
artgallery.redland.qld.gov.au

f /RedlandArtGallery
@redlandartgallery

Chez Beauvardia



REDLAND ART
GALLERY

Redland Art Gallery is an initiative of Redland City Council
and is dedicated to the late Eddie Santagiuliana.

Making your cargo ship:

We recommend the use of heavy duty scissors to cut the egg carton and a hot glue gun to glue the cargo ship together (for adult use only). Using glue is fine too, however, keep in mind it will need plenty of drying time and may be less sturdy for play.

- a) Gather your supplies.
- b) Cut the lid off the egg carton. Turn it upside down. The hollow lid now becomes the base for your ship.
- c) Cut off a section of four cups from the base of your egg carton.
- d) Glue the four cup piece upside down on top of the base of your ship.
- e) Glue the cardboard roll on top into the hole. You now have your cargo ship.
- f) Prime your cargo ship with white paint. Let dry completely.

1. Paint your cargo ship

Why not have a look at images of cargo ships in books or online for inspiration? Then paint your ship with the colours provided or start mixing a range of colours on your paint palette or plate. You can use the guide on the next page to help.

Once you have painted the ship, get creative by painting details such as a funnel, windows, propellers and more. Let it dry completely.

2. Cargo containers and accessories

Use the template provided to make your cargo containers. You can also use materials you find around the home to decorate your ship.



Suggestions:

- Stretched cotton balls could become smoke coming out of the funnel.
- A hollowed lid and some string could make a lifebuoy ring.
- Cut out paper could make an anchor or a flag.
- Black paper cut in the shape of tyres and glued around the ship could be fenders protecting the side of the vessel as it heads into port.
- The remaining egg pieces could be painted and decorated to make a tender boat (a boat used to transport people or supplies to and from shore).

Have fun and share your creations with us by tagging
@redlandartgallery @chezbeauvardia #RA@athome

Redland Art Gallery

Tel: (07) 3829 8899 or email:
gallery@redland.qld.gov.au

artgallery.redland.qld.gov.au

f /RedlandArtGallery

ig @redlandartgallery

Chez Beauvardia



**REDLAND ART
GALLERY**

Redland Art Gallery is an initiative of Redland City Council
and is dedicated to the late Eddie Santagiuliana.

Mixing paint:

- To measure the paint, use a teaspoon.
1 quantity = half a teaspoon of paint
- A dash means a really tiny bit of paint on the teaspoon
- Wipe clean your teaspoon/paintbrush between each colour.
- Try and always scoop an even quantity of paint.
- Also remember that each brand of paint will mix differently so you may need to experiment a little.



Light Colours / Dark Colours

Add a dash of white to lighten a colour.

Add a dash of black to darken a colour.



Purple / Brown

First mix 1 quantity of red and a dash of blue and you will have a deep purple colour.

Now add a dash of yellow and you will have a deep brown colour.



Orange

Mix 2 quantites of yellow with a dash of red for an orange colour.



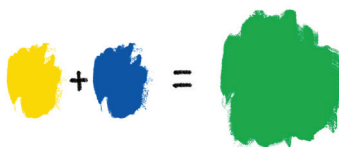
Grey

Mix 1 quantity of white with a dash of black for a grey colour.



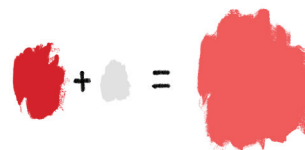
Green

Mix 1 quantity of yellow with 1 quantity of blue. For a light green add a dash of white.



Pink

You could try 1 quantity of red with a dash of white for a deep pink.



Redland Art Gallery

Tel: (07) 3829 8899 or email:
gallery@redland.qld.gov.au

artgallery.redland.qld.gov.au

f /RedlandArtGallery

@redlandartgallery

Chez Beauvardia



**REDLAND ART
GALLERY**

Redland Art Gallery is an initiative of Redland City Council
and is dedicated to the late Eddie Santagiuliana.

Cargo Container Templates

1. Colour (optional)
2. Cut _____
3. Fold - - - - -
4. Glue together

